

MOUNTED UNIT

user manual

Serial number

Edition **3**
10 - 2010

INDEX

<i>title</i>	<i>page</i>	<i>title</i>	<i>page</i>
INDEX	1	Water system plan with electric control unit, Mixer, and system washing unit with non-return valve	8
TECHNICAL INFORMATION	2	Tank filling	9
Main components	2	Water filling from the upper holes	9
Technical specifications	3	Water filling through tank filling hose.....	10
Safety devices	4	Product mixing	11
Position of signals	4	Preparation of chemical product.....	11
INFORMATION ABOUT HANDLING AND INSTALLATION	5	Mixing with mixer	11
Transporting	5	System diagram	14
Loading and unloading	5	Spraying	14
INFORMATION ABOUT ADJUSTMENTS	5	System washing and emptyng of residual volume	16
Adjustment of the sliding guides	5	INFORMATION ABOUT REPLACEMENTS	17
INFORMATION ABOUT USE	6	Filter cleaning	17
Connecting the equipment to tractor.....	6	Lubrication points diagram	18
SUPPORT LEGS	7		
System diagrams	8		

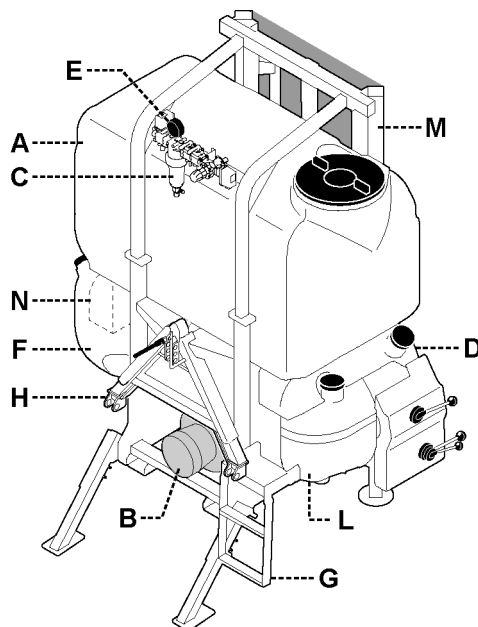
IMPORTANT SAFETY NOTE

The information published in this booklet regards the pointed out with relevant symbols in order to safeguard operational aspects of the operator unit installed on the people from risks. Remember that prudence is irreplaceable. machine. It is however

necessary that you carefully read the Safety is also in the hands of all the operators who interact general safety regulations published in Booklet 1 and those with the machine.

TECHNICAL INFORMATION

MAIN COMPONENTS



S_012.tif

- A)** Spray product tank.
- B)** Pump.
- C)** Water control unit
- D)** Clean water tank for hand washing.
- E)** Pressure gauge to measure the working pressure
- F)** Clean water tank for system washing.
- G)** Platform for getting on the sprayer
- H)** Automatic connection to the tractor
- L)** Mixer
- M)** Boom lifting device
- N)** Container for clothes

Information concerning components that is not included in this manual is detailed in the relevant instruction manuals.

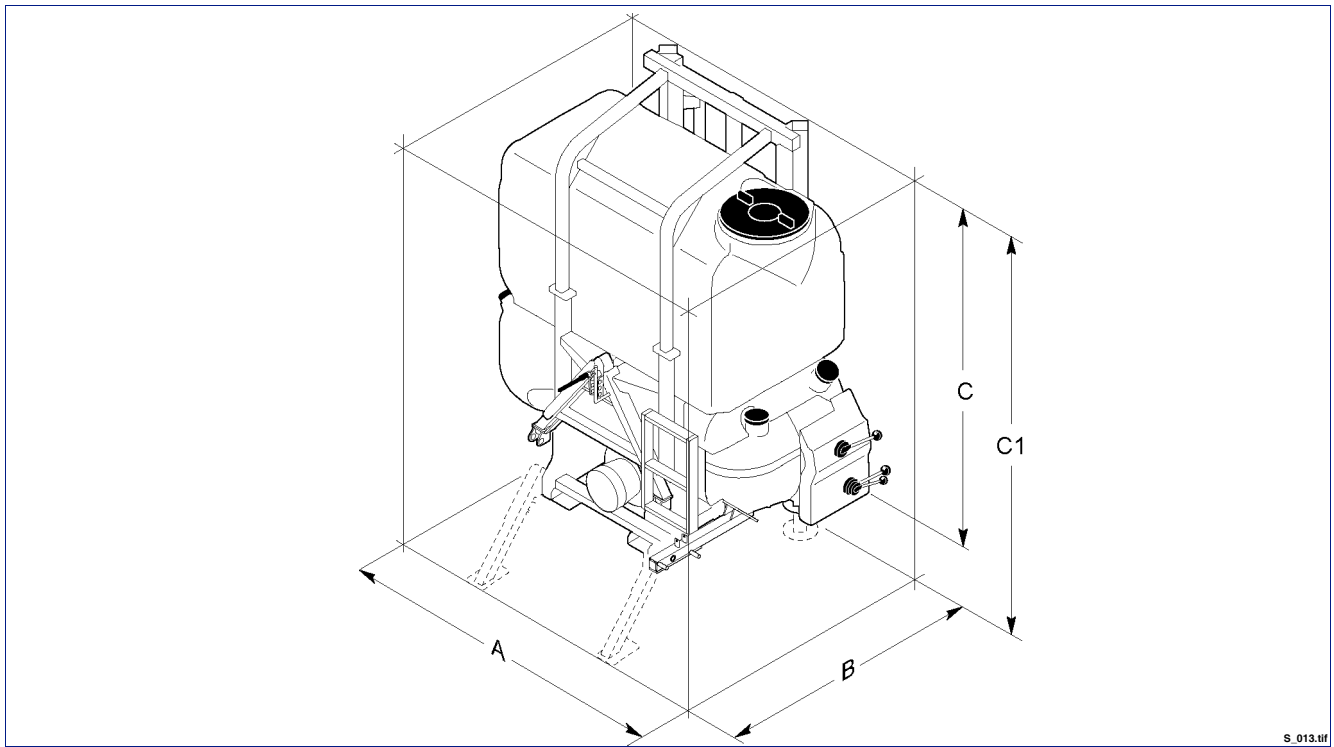
The information about the components that is not included in this manual is detailed in the relevant instruction manuals.

TECHNICAL SPECIFICATIONS

Models vary according to drawbar type and tank size.

Residual volume

The liquid volume that cannot be properly distributed (technical residue) does not exceed 0.5% of nominal volume plus 2 litres per boom meter.



S_013.tif

Model (Lt)	Capacity (Lt)	Size(mm)				Weight (kg)
		A	B	C	C1	
900	800	1900	1300	2260	2600	?
1100	1000	1900	1300	2260	2600	?
1300	1200	1900	1300	2260	2600	?
1600	1500	1900	1300	2260	2600	?

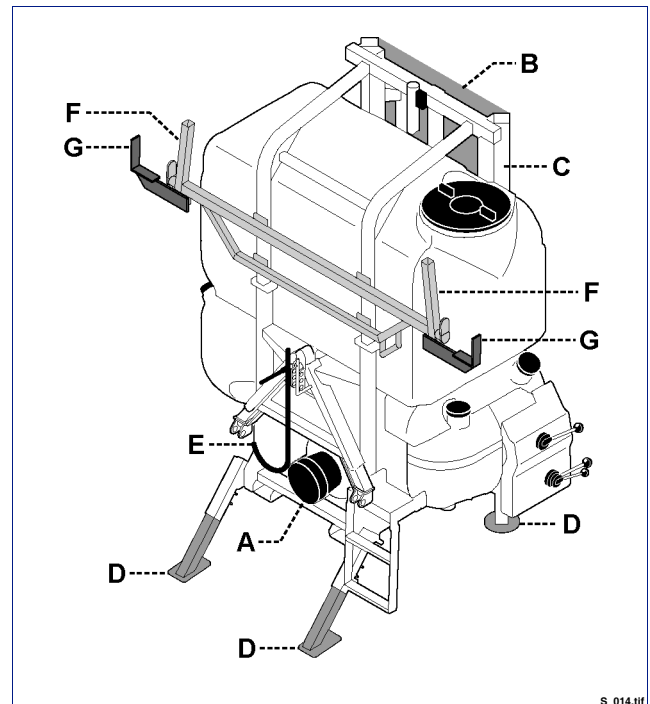
SAFETY DEVICES

- A) **Cardan shaft guard**: to avoid entanglement with parts of the body.
- B) **Stop valve**: device preventing the boom from dropping suddenly in the event of a leak in the hydraulic hose.
- C) **Fixed guard**: sliding frame protection.
- D) **Sprayer anti-overturn protection foot**: to avoid the overturn risk of the sprayer when it is disconnected from the tractor.
- E) **Cardan shaft support**: to support the shaft while disconnected from power take-off.
- F) **Support leg**: to support the equipment before disconnection so that reconnection is simpler.
- G) **Extension opening blocking**: prevents the unintentional opening of the boom extensions during road circulation.



Caution - Warning

Check daily that all safety devices are correctly installed and in working order.



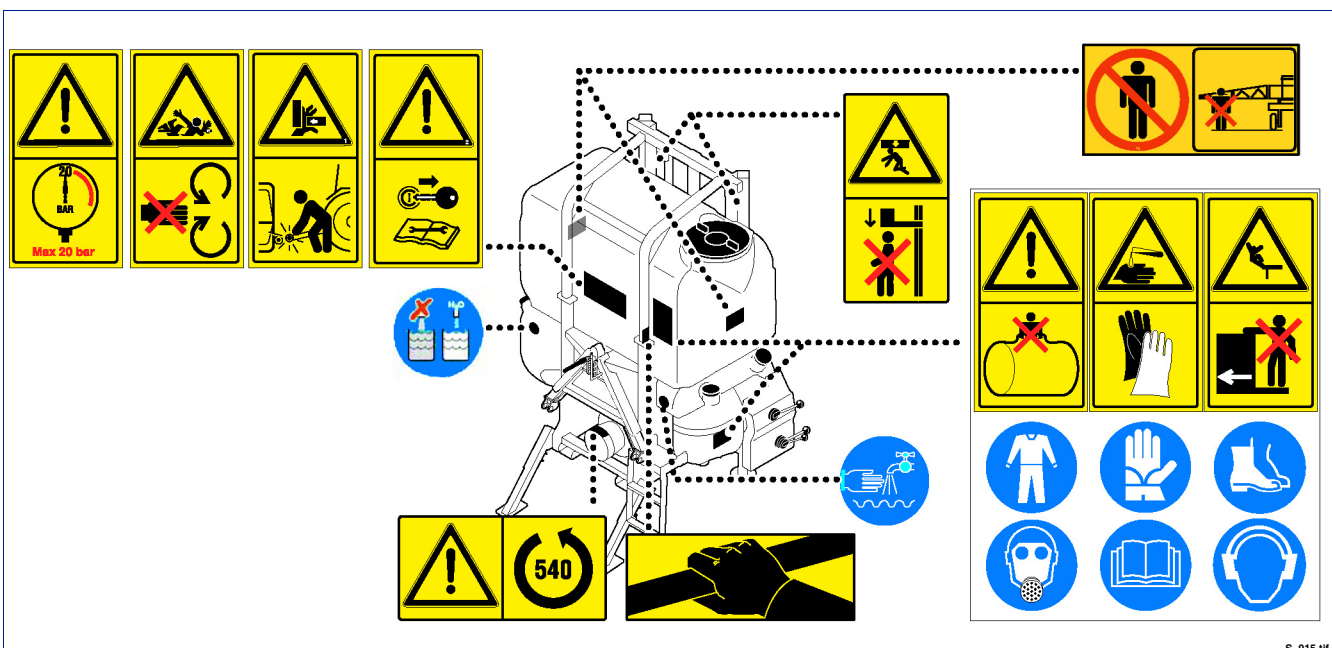
POSITION OF SIGNALS

The figure shows the location of all safety plates, while their meaning is explained in booklet 1.



Important

Make sure that all plates are legible. If they are not, clean or replace, if necessary, ensuring the new ones are placed in the original position.



INFORMATION ABOUT HANDLING AND INSTALLATION

TRANSPORTING

Loading and transporting can be carried out in different ways, according to the destination. In all cases the equipment must not be packaged.

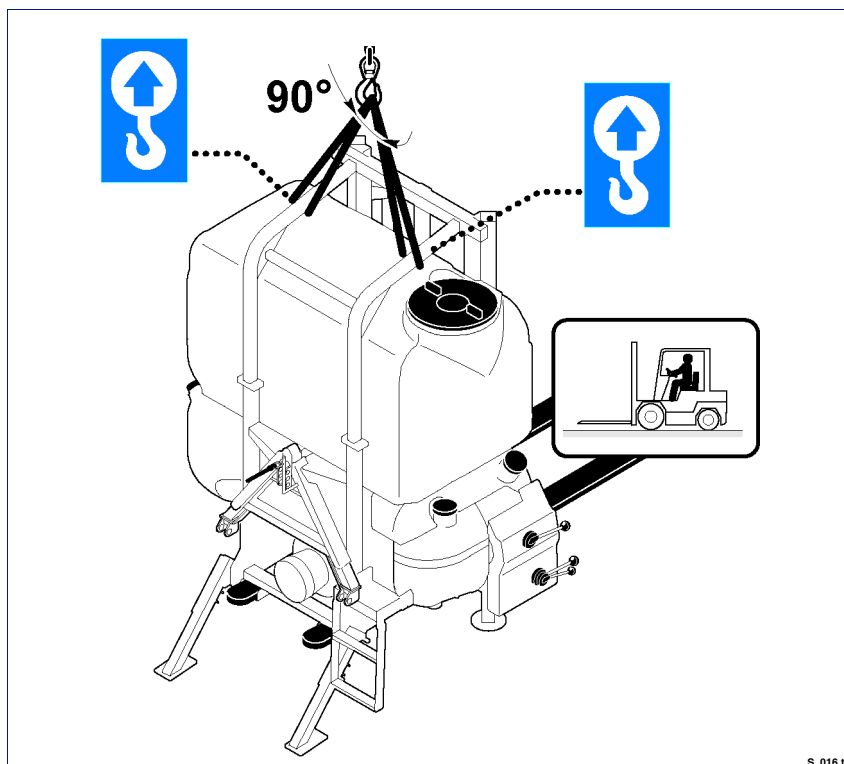
LOADING AND UNLOADING



Danger - Warning

Lifting and handling must be carried out with the tank empty and using appropriate equipment, by skilled staff specialized in this kind of operation.

- 1 - Prepare a lifting hook with an adequate loading capacity and connect as shown in the figure below.
- 2 - Lift slowly, move very gently and avoid all swinging.
- 3 - Load onto the vehicle and secure using ropes and chocks.



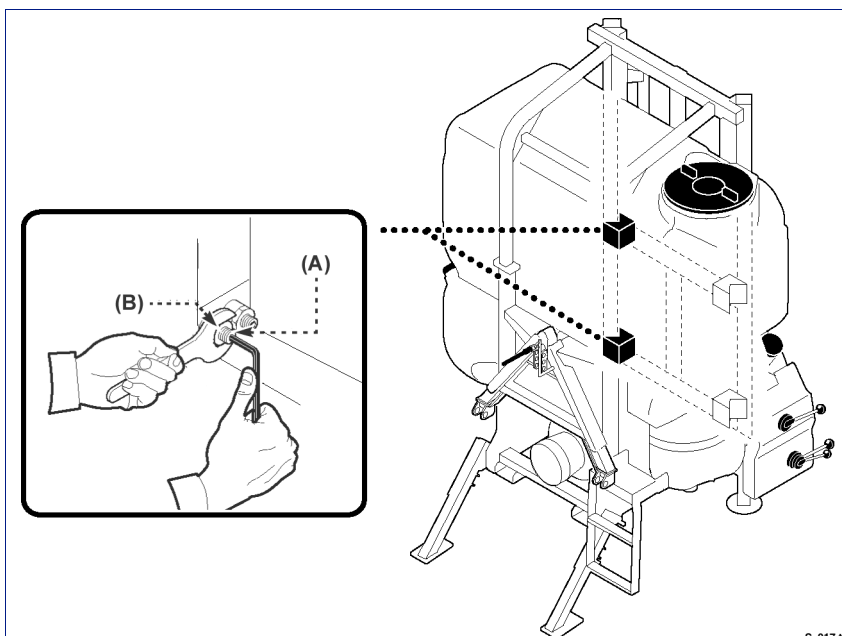
S_016.tif

INFORMATION ABOUT ADJUSTMENTS

ADJUSTMENT OF THE SLIDING GUIDES

Proceed as follows.

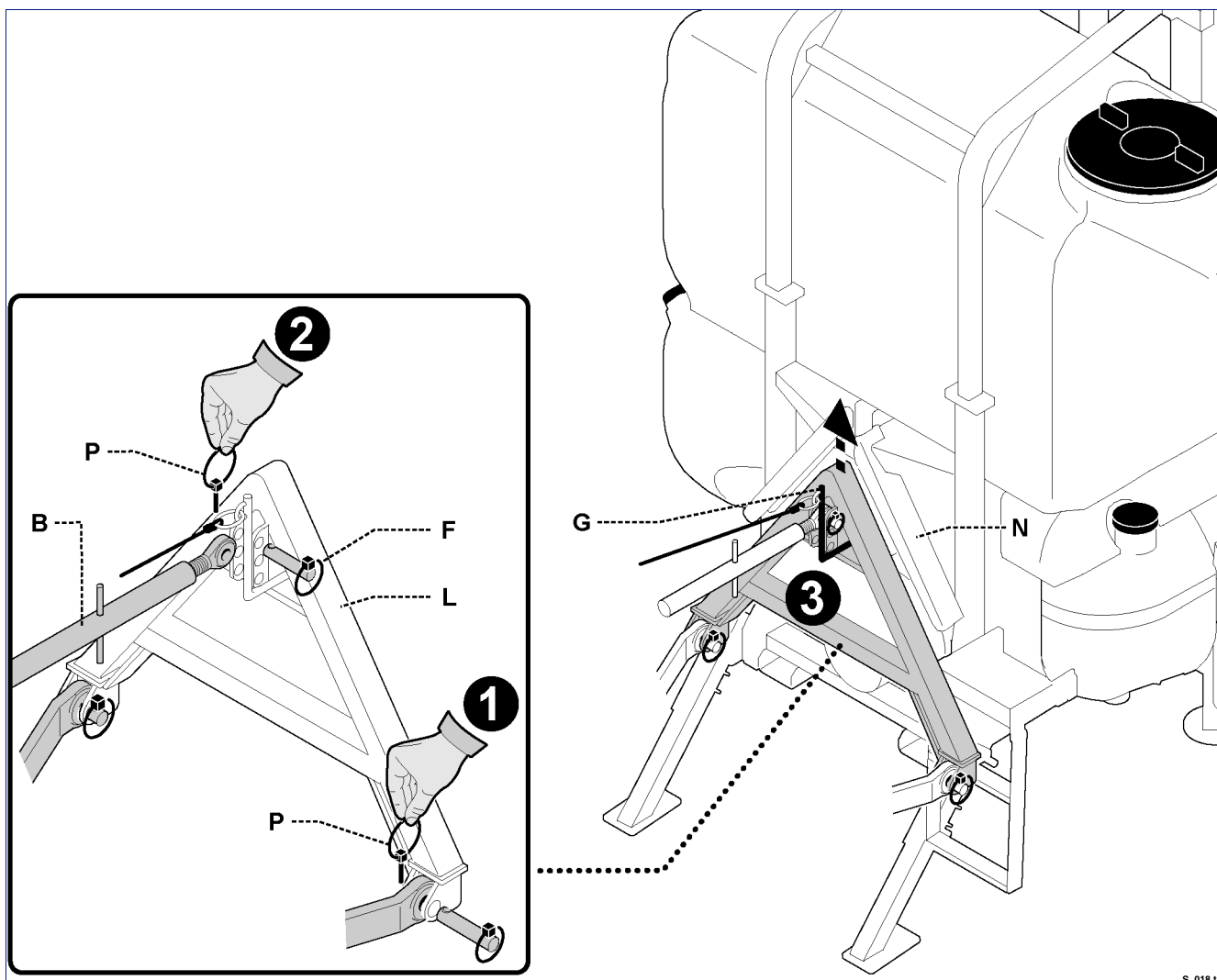
- 1 - Loosen nut **(B)**.
- 2 - Adjust adjusting screw **(A)** to regulate the guides until you obtain a regular sliding with no excessive play.
- 3 - Tighten counter-nut **(B)** after this operation.



S_017.tif

INFORMATION ABOUT USE

CONNECTING THE EQUIPMENT TO TRACTOR



Proceed as follows:

- 1 - Remove coupling (L) from support (N) by operating lever (G).
- 2 - Insert boom (L) into the lower arms of the tractor and insert the safety pins (P).
- 3 - Connect third point (B) by means of special pin (F) and insert safety pins (P).
- 4 - Position the lifting device of the tractor 10 cm lower than support (N).
- 5 - Move the tractor backward until coupling (G) reaches support (N) of the sprayer.
- 6 - Lift the lifting device until the equipment is connected.
- 7 - Insert safety pins (P).
- 8 - Switch off the motor, activate the parking brake and leave the tractor; remove and keep the ignition key.

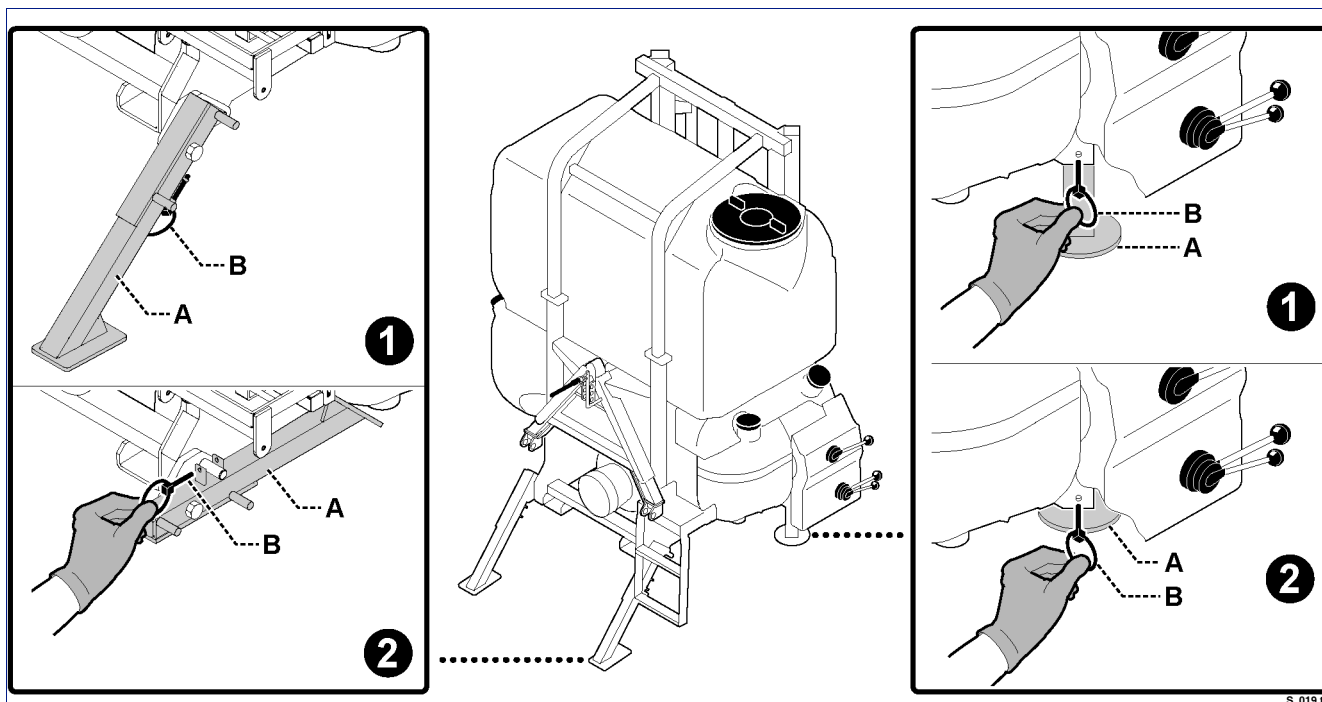
- 9 - Adjust the length of third point (B) and fasten it to the equipment in the correct position by means of the special dowel and the special safety pin so that the machine is parallel to the ground during the working operations.



Danger - Warning

Make sure that all safety pins have been inserted in order to avoid the accidental disengagement of the pin arms. Use suitable pins only.

SUPPORT LEGS



Support legs (A) keep the equipment at a suitable height, which allows for easy connection and disconnection from the tractor.



Important

During the working phase the support legs must be closed in position 2.

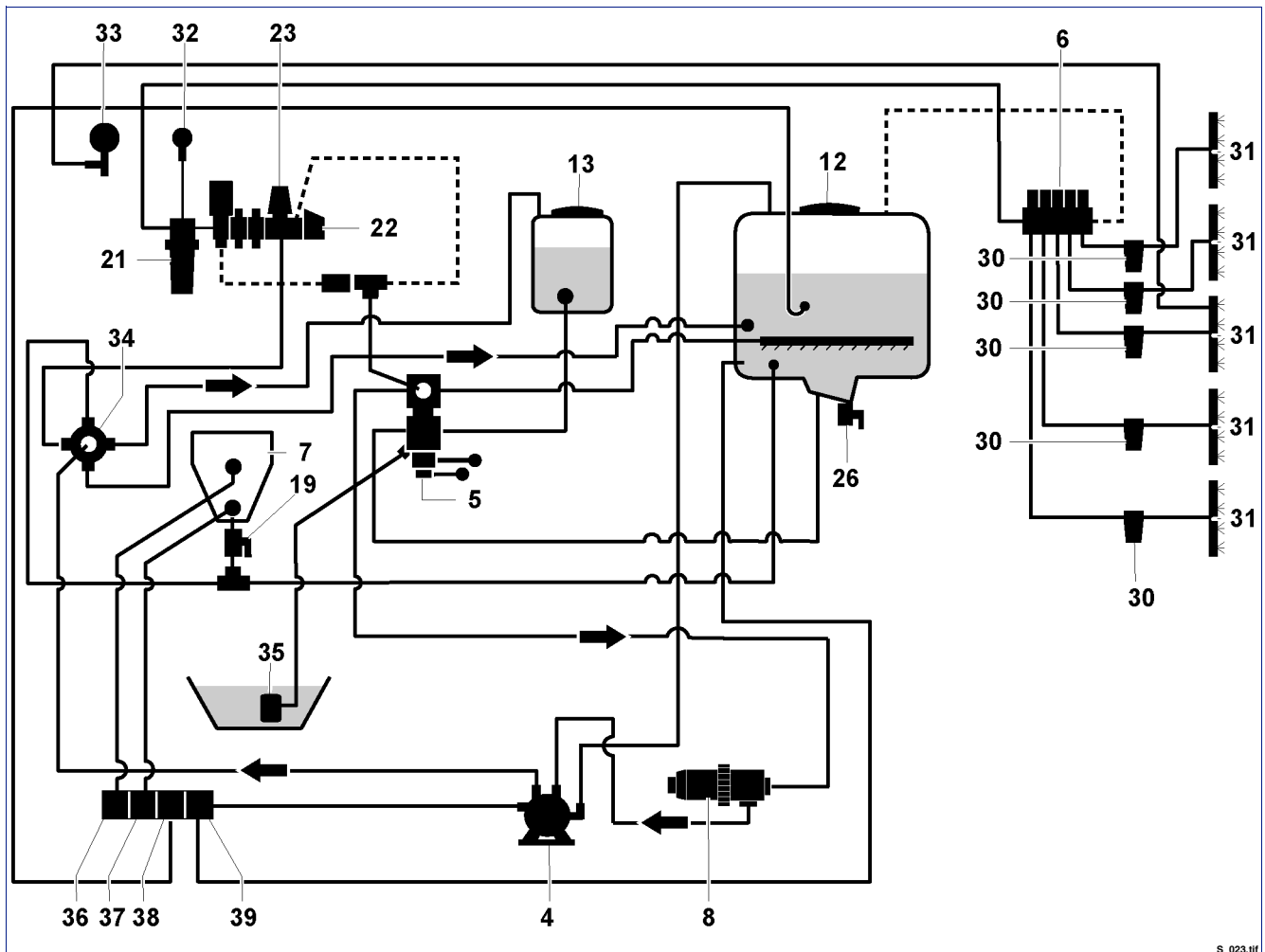
Position 1 - position of the support legs for the equipment parking phase.

Position 2 - position of the support legs for the equipment working phase.

- Remove pins (B) and place the legs to the desired position. Insert pins (B) after completing the adjustment.

SYSTEM DIAGRAMS

Water system plan with electric control unit, Mixer, and system washing unit with non-return valve



S_023.tif

Legend

- | | | |
|--|---|-----------------------------------|
| 1 - Diaphragm pump | 26 - Tank emptying valve | 39 - Agitator lever valve in tank |
| 2 - Valve assembly | 30 - Distribution line filters | |
| 3 - Solenoid valve assembly | 31 - Stainless steel pipes | |
| 4 - Mixer | 32 - Pressure gauge | |
| 5 - Suction filter | 33 - Working pressure gauge | |
| 12 - Product tank | 34 - 5-way valve | |
| 13 - Clear water tank (system washing.) | 35 - Tank filling hose | |
| 19 - Product transfer valve | 36 - Container washing lever-operated control valve | |
| 21 - Control unit line filter | 37 - Mixer filling lever valve | |
| 22 - Main engine | 38 - Tank inside washing lever valve | |
| 23 - Pressure control engine | | |

TANK FILLING

The tank can be filled in two different ways:

- Water filling from the upper holes (page 9);
- Water filling through tank filling hose (page 10);



Important

When filling the tank, ensure that hand-washing tank (B) has been filled with clean water and filled it up, if necessary.

WATER FILLING FROM THE UPPER HOLES

Use an external water source or a tank that is located on a level higher than filling hole (A and C).

Fill tank (B) with hand-washing water



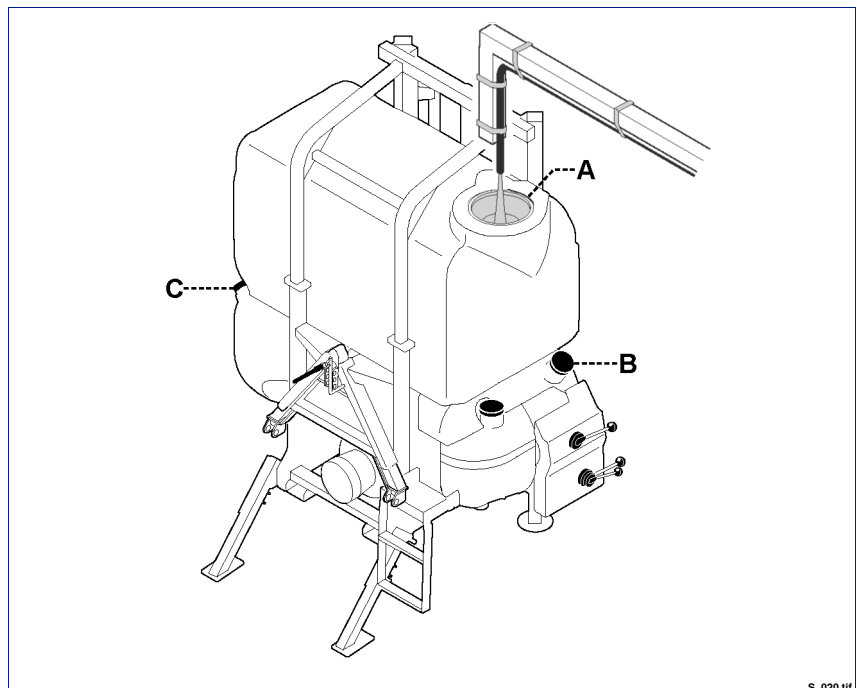
Important

Tank filling opening (A) must be equipped with the basket filter (mesh size 1 mm).



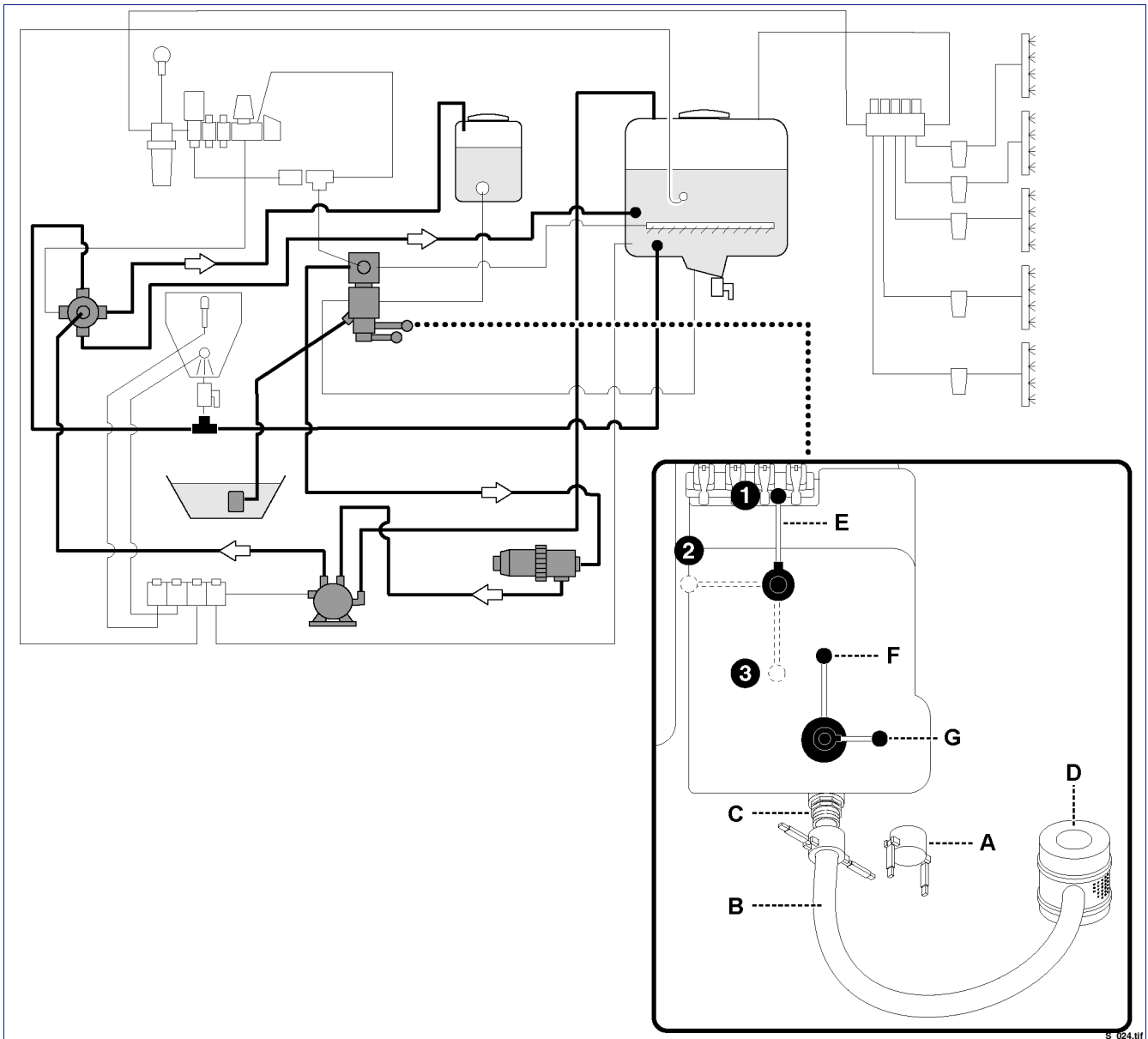
Important

The tank (B) must be filled with clean water.



S_020.tif

WATER FILLING THROUGH TANK FILLING HOSE



S_024.tif



Caution - Warning

Make sure that no part of the tank-filling hose comes into contact with the chemical spray products, so that the water source does not become polluted.

- 1 - Plunge floating filter (D) into the water source (reservoir, external tank, ditch, etc).
- 2 - Remove the cap (A) from the coupling (C).
- 3 - Connect the tank-filling hose (B) to the coupling (C).
- 4 - Place the valve levers (F-G) in the position shown.
- 5 - Place lever (E) to position 1, 2 or 3 according to the desired type of filling:
 - **Position 1:** product tank filling
 - **Position 2:** clean water filling for system washing.

- **Position 3:** product tank filling with water passage from mixer for product mixing.

- 6 - Connect the PTO.
- 7 - When filling is over, reduce the power take-off rpm.
- 8 - When the operation is over, disconnect the hose (B) and replace the cap (A). The machine is ready to start spraying.

PRODUCT MIXING

Preparation of chemical product



Important

Before starting the preparation of the chemical product, adopt all measures that are necessary to avoid contamination danger and risks for men, animals and environment.

In particular:

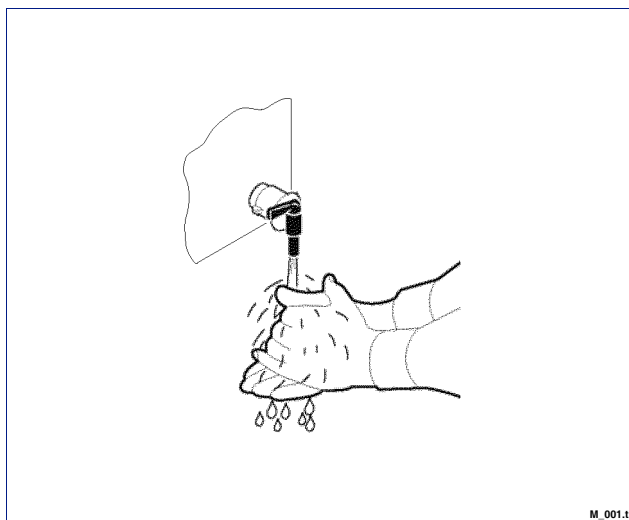
- Wear protection clothing to avoid the direct contact with parts of the body, especially in the presence of wounds.
- Wear personal protective equipment to protect your face, head and hands, use rubber gloves, dust masks, safety glasses and helmet.
- Do not use protection devices that are not in perfect operating conditions, in particular check the state of the gas mask and cab filters.
- Keep the chemical products out of the reach of unauthorised persons (especially children and disabled).
- Arrange all the equipment that is necessary to handle the chemical product and the mix during the preparation, filling, draining and cleaning of the tank, as well as during the product distribution, adjustment, replacement or add of plant protection products and maintenance operations.
- Calculate the exact quantity of product to be mixed according to the surface to be treated and comply with the instructions supplied by the plant protection product manufacturer. Do not mix different products.

- In case of accidental contact of the product or mix with the skin, wash immediately with clean water. In case of illness refer to medical assistance, showing the product label.



Caution - Warning

Do not dispose of the product, the mix or other polluting material in the environment. Disposal must be performed in accordance with the current regulations on waste.

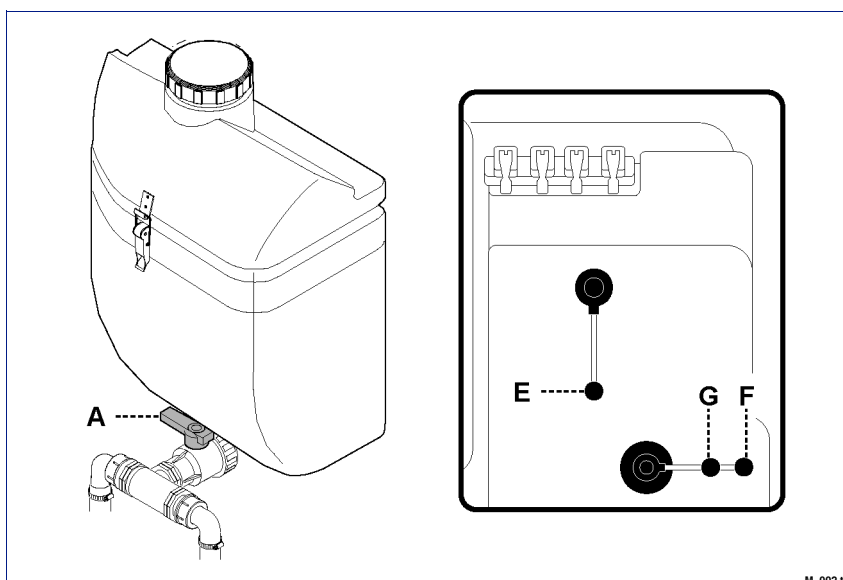


M_001.tif

Mixing with mixer

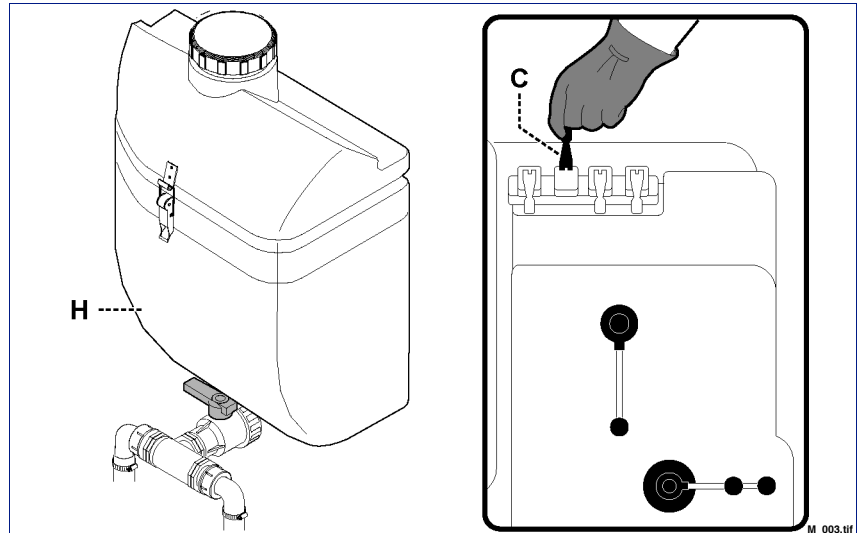
To mix the product, follow the procedure below:

- 1 - Make sure that the system is clean and pour the necessary water for the treatment into the main tank (see page 9, 10).
If a sufficient water quantity is present in the main tank, pass to the next phases.
- 2 - Position the valve levers (**A - G - F - E**) as shown in the picture.
- 3 - Activate the pump.

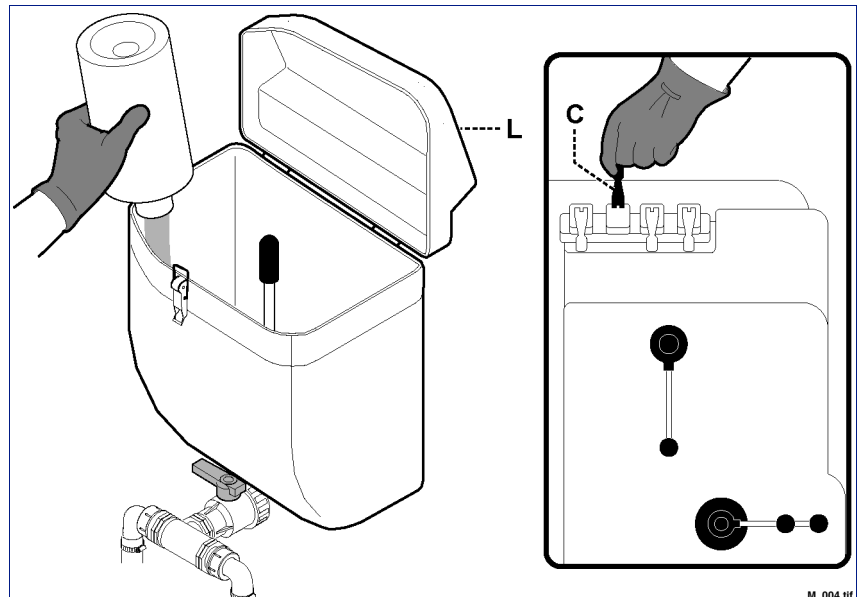


M_002.tif

- 4 - Open the valve (C) and insert about 15 cm into the tank (H).



- 5 - Open the cover (L), with the valve (C) open and load the chemical product to be mixed.



- 6 - Open the valve (D) to rinse the chemical product container.



Danger - Warning

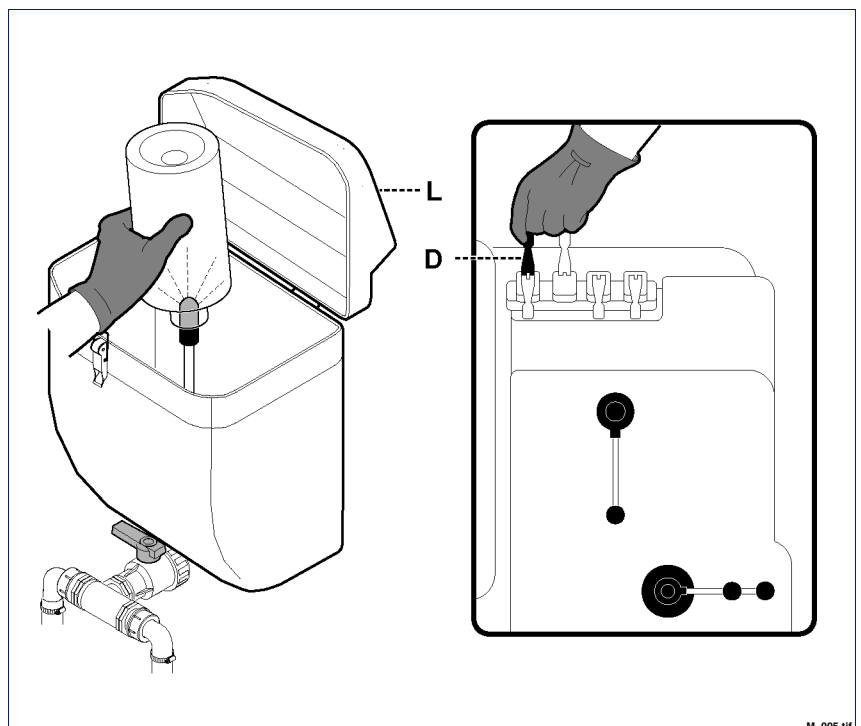
Do not operate the valve (D) until the container is placed on the nozzle, so as to avoid water spills that might hurt the operator.



Danger - Warning

Do not pollute the environment with empty containers. Dispose of empty containers in accordance with the waste disposal regulations in force in the country of use.

- 7 - Close the cover back and wait until the liquid level rises to approximately mid-tank.

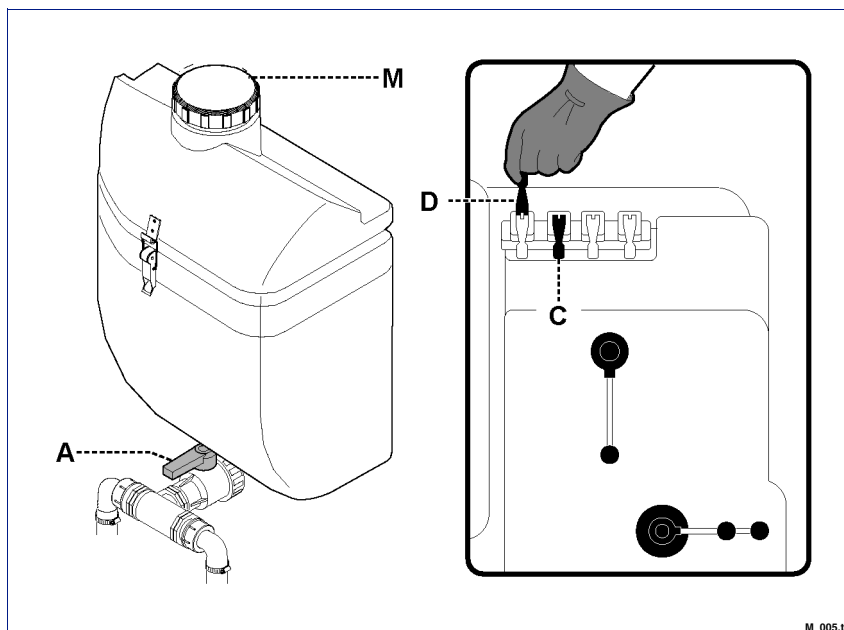


- 8 - Open the valve **(A)** to empty the tank.
- 9 - Shut off the valve **(C)**.
- 10- Operate the valve lever **(D)** to rinse the equipment.



Danger - Warning

Keep the cover closed when you perform this operation, so as to avoid water spills that might hurt the operator. Control through the inspection hole **(M)**.

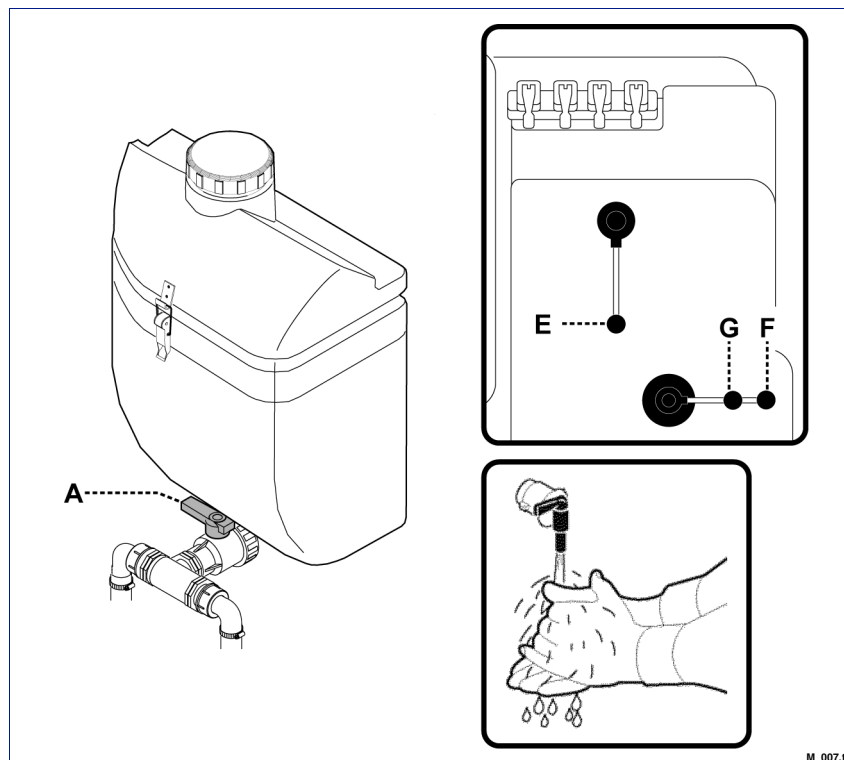


- 11 - Close valve **(A)** and turn the levers of valves **(G - F - E)** to work position.

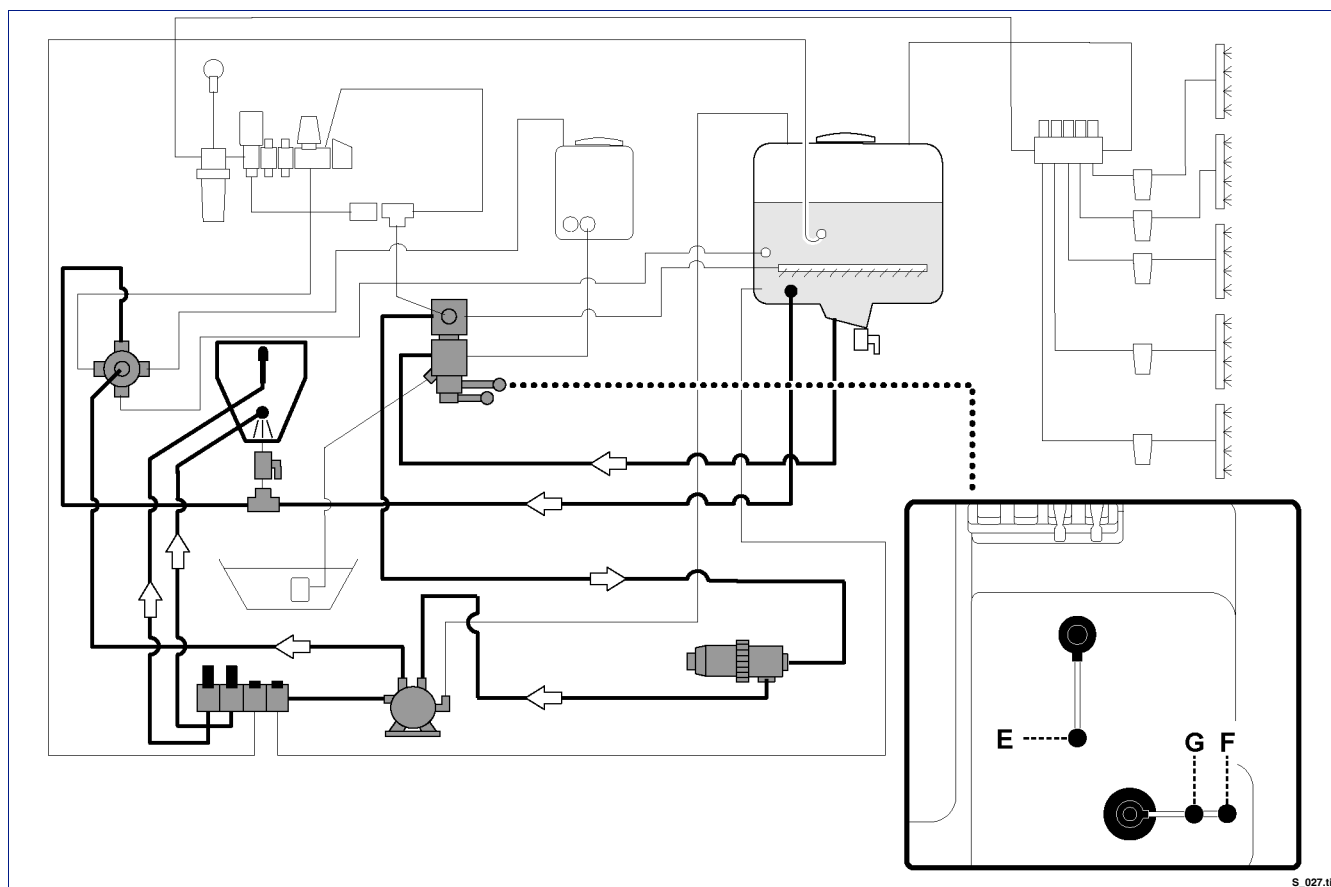


Important

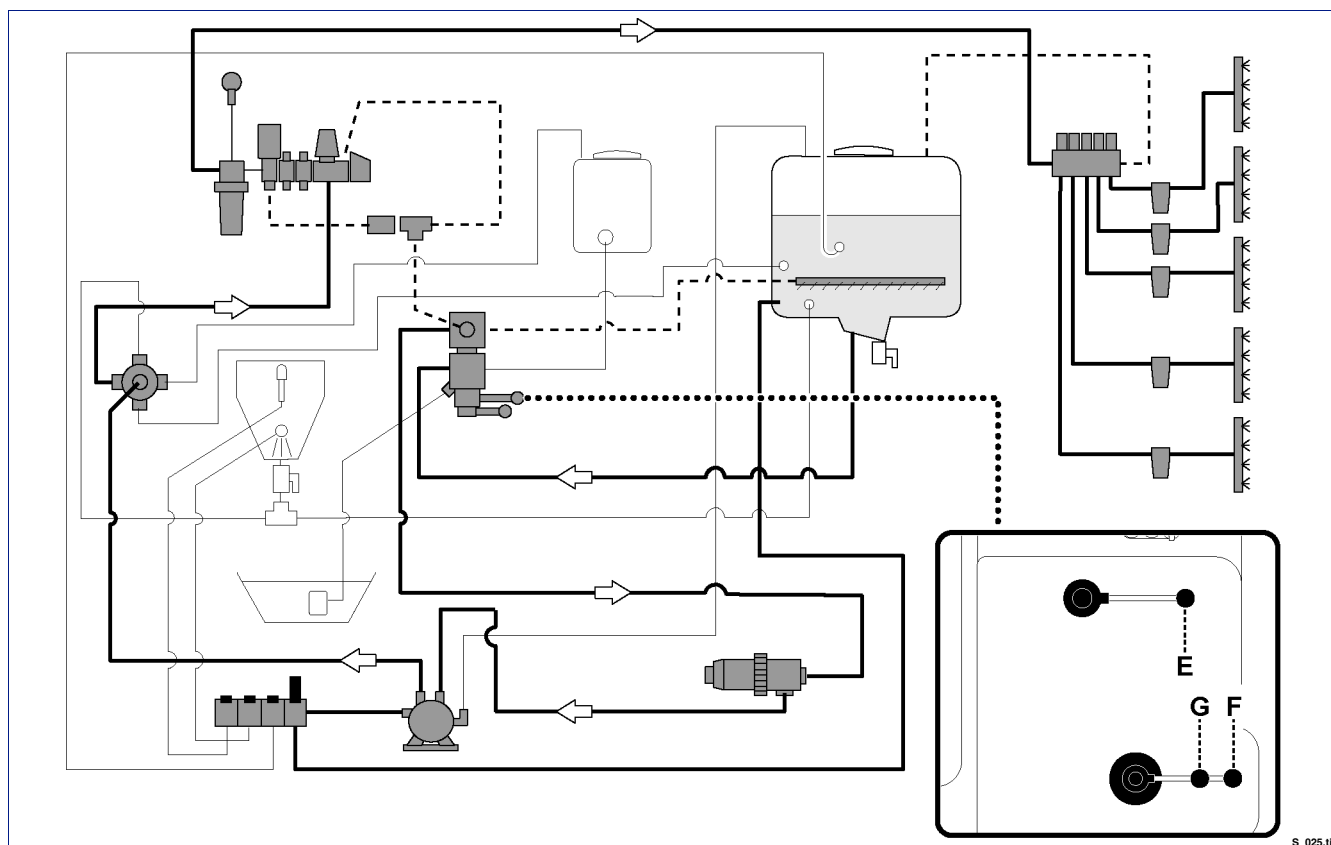
In case of accidental contact of the product or the mixture with skin, flush immediately with the fresh water contained in the hand-washing tank.



System diagram



SPRAYING



**Important**

The environment and field conditions of the area where you plan to operate have to be checked every time the equipment is set up for spraying.

Evaluate the following requirements.

- Check whether or not there are electric lines and assess the risks of contact with the spraying booms.
- Check the gradient of the land so as to evaluate the most suitable conditions for operating in safety. Always bear in mind the maximum gradients allowed.
- In the event of spraying while moving crosswise to the slope, follow the instructions extremely carefully:

Boom unfolding stage: always unfold the uphill boom first, and then the downhill boom.

Boom folding stage: always fold the downhill boom first, and then the uphill boom.

- Never leave the downhill boom alone unfolded.
- Keep the forward speed moderate (max. 8-10 km/h) to prevent the booms from swinging and to keep spraying even.
- Before you start spraying an area, make sure there is enough product in the tank.
- It is important to be up to date with the weather conditions while spraying. Wind speed should not exceed 5m/sec.

Proceed as follows for spraying:

- 1 - Position the levers of valves (**F - G - E**) as shown in the figure.
- 2 - Connect the tractor PTO (max. 540rpm).
- 3 - Unfold the spraying boom.
- 4 - Select the sections of the boom that correspond to the area to be sprayed.
- 5 - Operate the levers of the water control unit in order to feed the boom and to start the tractor.

**Important**

If it is windy, (even below the maximum limit of 5 m/sec) to prevent the product from drifting, keep the boom low and increase the size of the droplets.

**Danger - Warning**

Prevent outsiders from approaching the working area when the equipment is in use. If necessary, stop spraying immediately and get the people in the risk area to move away.

SYSTEM WASHING AND EMPTYING OF RESIDUAL VOLUME



Caution - Warning

Pollutant substances must be properly disposed of in compliance with current legislation. Special care should be taken to avoid polluting waterways and groundwater with spraying chemicals. Keep product out of reach of children.

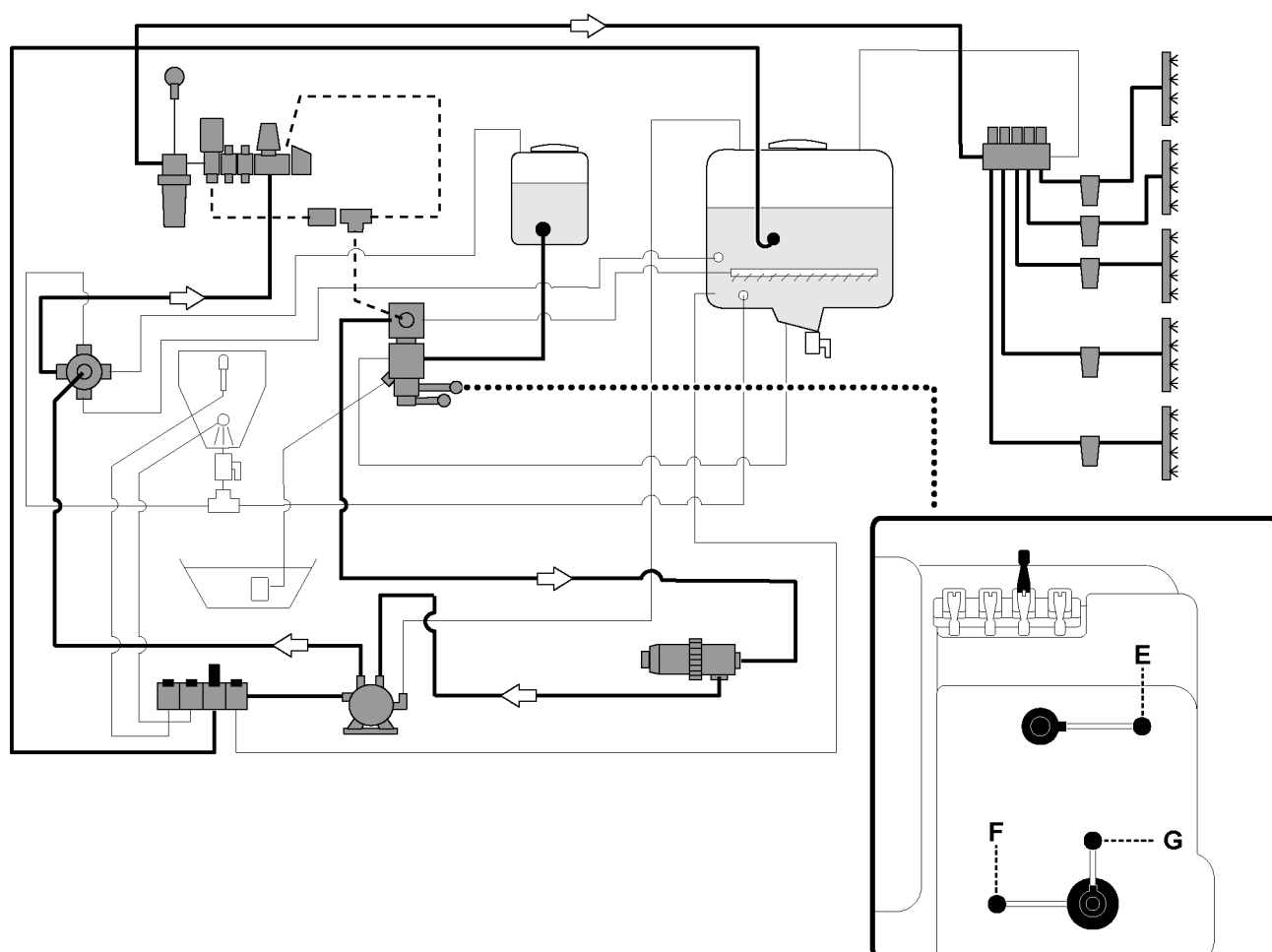


Important

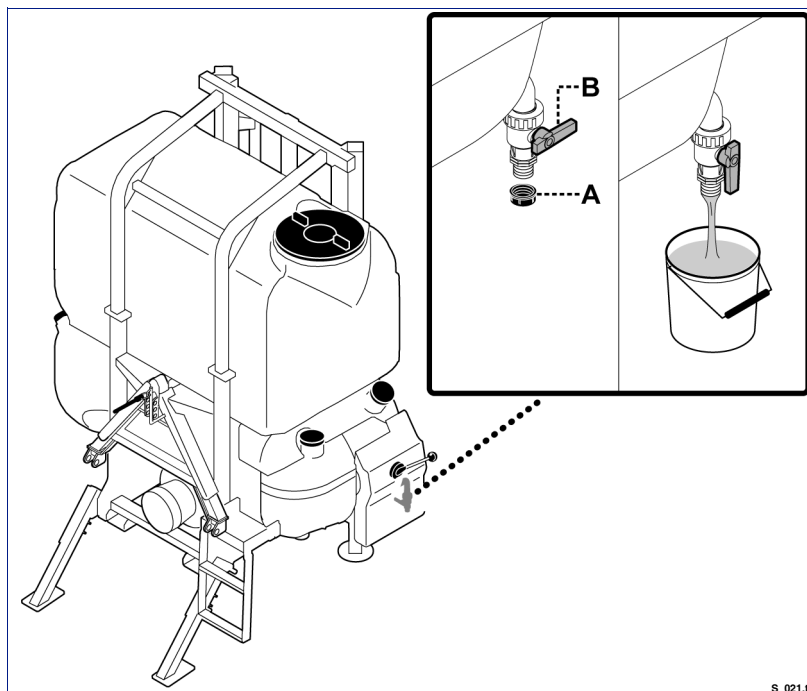
Residual volume is the leftover liquid that cannot be suctioned up and remains on the bottom of the tank.

- Place valve levers (**F - G - E**) in the position shown.
- Activate the power take-off and spray all the liquid that can be sucked on the surface to be treated.
- Activate the tank washing system (if present).

- If the tank washing system is not present:
 - Switch off the motor, activate the parking brake and leave the tractor; remove and keep the ignition key.
 - Remove the main lid of the tank and clean the walls with a jet of water.



- Place a receptacle beneath valve **(B)**, remove cap **(A)** and open the lever to drain off the residual liquid.
- Close the lever again **(B)** and replace the cap **(A)**.

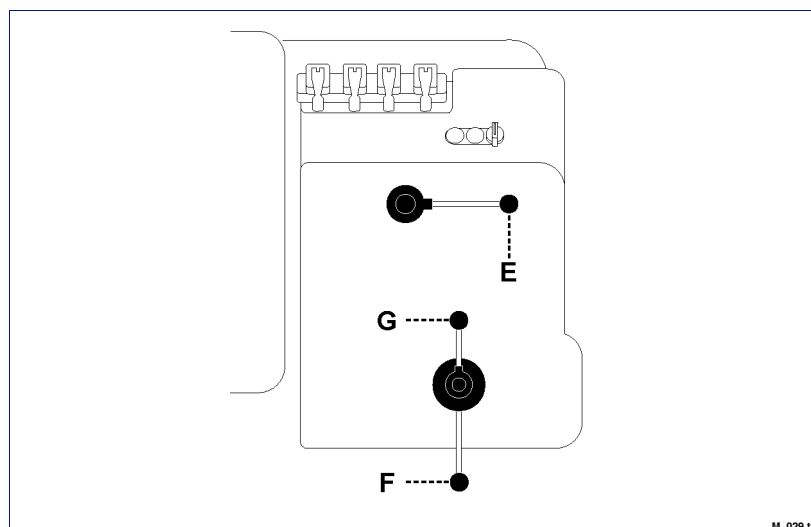


S_021.tif

INFORMATION ABOUT REPLACEMENTS

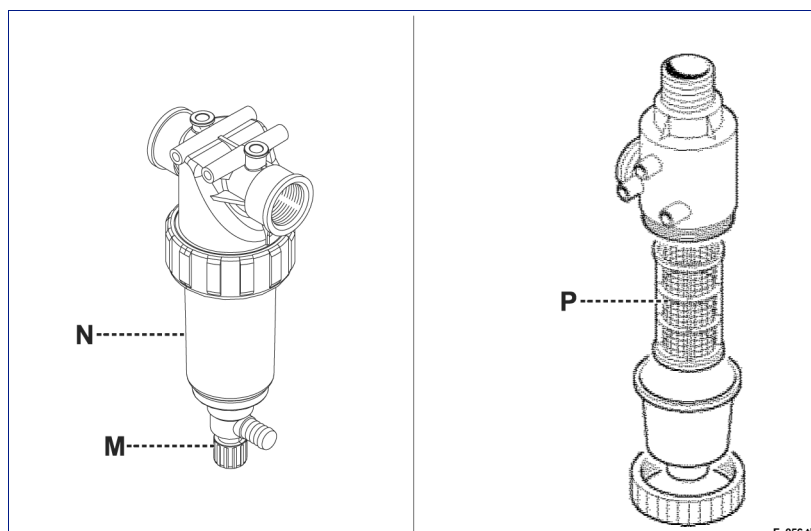
FILTER CLEANING

- Turn the levers **(E - F - G)** as shown in the picture.



M_029.tif

- Open valve **(M)** to clean filter **(N)**.
- Remove the intake filter **(P)**, mesh size 0.25 mm, and wash it with a water jet.
- Remove the in-line bar filters (see leaflet 9) and wash them with a water jet.
- Wash the outside of the tanks and the areas in contact with the product with a water jet.



F_056.tif

LUBRICATION POINTS DIAGRAM

Oil all greasing points and sliding surfaces, particularly whenever the system is washed.

Use *PERSIAN POLIGREASE 2* grease



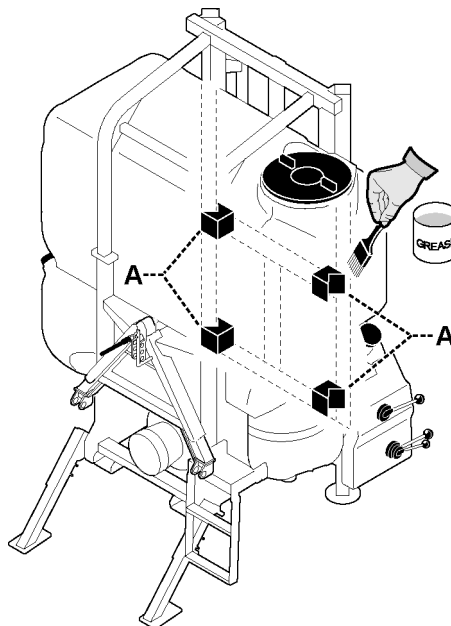
Important

When the lifting device slides with an excessive play, adjust sliding blocks (A) as shown on page 5.



Important

The replacement of sliding blocks (A), if it is necessary, shall be carried out only by personnel trained for this intervention.



S_022.tif